



HARBOUR GRAND

KOWLOON



GRAND
HAS NO LIMITS



OVERVIEW

Welcome to Harbour Grand Kowloon.

A stay at our luxury Kowloon hotel in Hong Kong allows guests to experience the urban beauty of the city from a unique vantage point.

Nestled beside Victoria Harbour and the new MTR Whampoa Station, Harbour Grand Kowloon is a private retreat offering luxurious accommodation and diverse dining options, as well as the venue of choice for heads of state, international athletes and celebrities.

LOCATION

Harbour Grand Kowloon enjoys one of the most unique and accessible locations in the city, right on the Victoria Harbour waterfront in the breezy Whampoa Garden district.

TRANSPORTATION

The hotel is just a few steps from the new MTR Whampoa Station (Exit D2); 10 minutes from the Airport Express Line at Kowloon Station and adjacent to Hunghom Ferry Pier travelling to North Point.

MTR (Mass Transit Railway)

The opening of the new MTR Whampoa Station connects the Hotel to the city's busiest sections including Admiralty and Central; the most popular tourist attractions are all within reach (for instance, Temple Street in Jordan and Ladies' Market in Mong Kok are just three stops away).





ACCOMMODATION

Harbour Grand Kowloon offers over 900 luxurious and well-appointed guest rooms and suites. Our luxury accommodation has spacious rooms designed for guests who are particular about comfort and functionality. The majority of our beautifully appointed rooms boast outstanding harbour views.

Equipped with Wi-Fi service, our guest rooms and suites share a contemporary, spacious setting and are available on a daily and long stay basis. A host of valuable benefits and privileges are available on the Harbour Club Floors. Two magnificent Presidential Suites house our most discerning guests. Ranging from 36 to 104 sq. m. (390-1,120 sq. ft.), our rooms are categorised into Courtview Rooms, Harbourview Rooms and Deluxe Harbourview Suites.

360 Tower rooms and suites are also available in the new extension building, offering modern stylish and contemporary furniture, exquisite marble bathrooms and facilities that reflect a sense of polished style and refinement.

Standard Services:

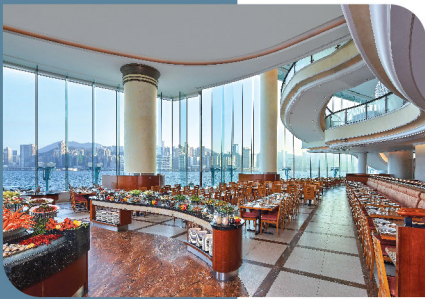
- 24-hour private dining services
- Air ticket confirmation
- Restaurant bookings
- Sightseeing tours
- Messaging service
- Concierge and valet parking services
- 24-hour security service
- Mailing and courier services
- Transportation services (limousine hire, airport transfer)





DINING

Whatever the occasion or your palate, dining options abound at Harbour Grand Kowloon. Choose from International buffet, traditional Japanese barbecue, timeless western affair at our fine-dining grill or casual European dining at our restaurants. Halal-certified food is also available upon request.



The Promenade

Embark on a memorable dining adventure to stimulate the senses. The Promenade showcases an international buffet and à la carte menu, served throughout the day. The abundant breakfast, lunch and dinner buffets offer Japanese, Indian, Southeast Asian and Western dishes, as well as delectable, handcrafted desserts.



Harbour Grill

Featuring an astonishing harbour view, Harbour Grill is a fine dining restaurant that offers high quality steak, seasonal European favourites and premium seafood, complemented with an extensive list of fine wines.

Robatayaki

Recommended by the Michelin Guide for three consecutive years (2016 - 2018), Robatayaki brings guests on an authentic Japanese culinary journey. Enjoy Japanese barbecue prepared on open grills in front of you, delectable sushi and sashimi, complemented with a fine selection of sake to further enhance your dining experience.



Corner Café

Situated in a quiet sunlit corner of the lobby, Corner Café serves premium coffee and tea, and a selection of homemade pastries, sandwiches and other delicacies.





MEETING & EVENTS

Located just footsteps from MTR Whampoa Station, Harbour Grand Kowloon offers an iconic harbourfront location with close links to the city's busiest sections and major tourist destinations. Featuring the latest audio-visual facilities, a private pier and business support services, the hotel offers a remarkable location for your event and special occasion.

With approximately 2,350 m² of event space and 12 functional venues including a brand new Whampoa Conference Centre on a dedicated floor, the hotel can cater for functions of every size and type, from large-scale conferences and private parties to intimate gatherings and corporate meetings. The existing event spaces including the Grand Ballroom have also been renovated to elevate guests' experience with our enhanced modern stylish venues.

At Harbour Grand Kowloon, we pride ourselves in offering custom-crafted meetings and events to delight our guests. We believe that providing responsive and engaging service will ensure that we deliver a memorable meeting. Our dedicated event planners will take care of every detail, so that you can mingle with your mind at ease.

Conference & Banqueting Capacity

Venue	Size		Banquet	Cocktail	Meeting			
					Classroom	Theatre	Boardroom/ Hollow Square	U-Shape
	Sq. Ft.	Sq. m.	No. of Person	No. of Person	No. of Person	No. of Person	No. of Person	No. of Person
Grand Ballroom	4,500	418	396	600	234	550	84	80
Grand Ballroom I	1,797	167	120	250	75	179	48	35
Grand Ballroom II	2,206	205	144	280	84	212	48	35
Pre-function area	3,200	300	N/A	250	N/A	N/A	N/A	N/A
Grand Salon	1,722	160	84	110	66	136	36	28
Grand Salon Pre-function area	1,959	182	80	80	N/A	N/A	N/A	N/A
Salon 01 & 02	2,435	226	144	200	90	200	N/A	N/A
Salon 01	1,660	154	96	150	54	145	38	30
Salon 02	775	72	48	50	24	50	22	18
Salon 03	775	72	48	50	24	50	22	18
Whampoa 01 & 02	1,991	185	96	100	60	100	27	33
Whampoa 03 & 04	872	81	48	70	N/A	N/A	N/A	N/A
Whampoa 05 & 06	1,065	99	48	70	N/A	N/A	N/A	N/A
Whampoa 01	1,237	115	60	70	40	80	27	28
Whampoa 02	753	70	24	30	20	20	18	N/A
Whampoa 03	495	46	24	30	20	20	15	15
Whampoa 04	462	43	24	30	20	20	15	15
Whampoa 05	409	38	24	30	20	20	15	15
Whampoa 06	570	53	24	40	20	20	15	15
Whampoa 08	1,657	154	72	100	50	100	20	20

Venue	Dimension		Ceiling Height	
Grand Ballroom	43' x 91'	13.23m x 28m	15'7" - 16'7"	4.77m - 5.07m
Grand Salon	36' x 46'6"	11m x 14.19m	9'8" - 17'	2.95m - 5.2m
Salon 01	30'5" x 45'7"	9.36m x 14.03m	8'6" - 8'9"	2.62m - 2.68m
Salon 02 & 03	23'4" x 23'4"	7.18m x 7.79m	8'6" - 8'9"	2.62m - 2.68m
Whampoa 01 & 02	43'8" x 51'	13.35m x 15.54m	7'7" - 8'4"	2.31m - 2.54m
Whampoa 03 & 04	19'2" x 53'8"	5.88m x 16.4m	7'7" - 8'3"	2.31m - 2.52m
Whampoa 05 & 06	16'6" x 61'5"	5.07m x 18.75m	7'7" - 8'3"	2.31m - 2.52m
Whampoa 01	38'5" x 43'4"	11.75m x 13.25m	7'7" - 8'4"	2.31m - 2.54m
Whampoa 02	20'7" x 29'4"	6.32m x 8.98m	7'7" - 8'4"	2.31m - 2.54m
Whampoa 03	19'2" x 26'1"	5.88m x 7.96m	7'7" - 8'3"	2.31m - 2.52m
Whampoa 04	18'3" x 27'6"	5.6m x 8.44m	7'7" - 8'3"	2.31m - 2.52m
Whampoa 05	15'1" x 27'5"	4.61m x 8.39m	7'7" - 8'3"	2.31m - 2.52m
Whampoa 06	16'6" x 34'	5.07m x 10.36m	7'7" - 8'3"	2.31m - 2.52m
Whampoa 08	37'4" x 45'9"	11.42m x 14.01m	7'7" - 7'10"	2.31m - 2.41m



RECREATION

Harbour Grand Kowloon aims to exceed all expectations as we welcome guests from around the globe. With this in mind, you will find our business and recreation facilities prepare you to take on the world - or the bustle of Hong Kong.

Fitness Centre

The top-floor Fitness Centre boasts an inspiring view across the harbour.

The Fitness Centre includes state-of-the-art nautilus and cardio machines, Smith machines, free weights and a full-time trainer to challenge your body.

A solarium and men's and women's saunas and steam baths remove all traces of stress and fatigue.



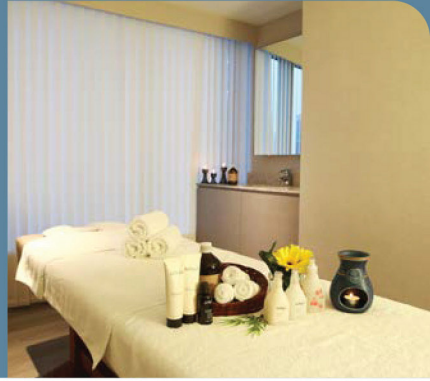
Swimming Pool

On the roof, surrounded by comfortable chaise lounges, this famous pool with panoramic harbour views makes for a dazzlingly unique and memorable swim.

Our pool bar and whirlpool ensure complete relaxation.

SPA

Featuring natural skin care products and Pattrena massage oil, Harbour Grand Kowloon offers soothing spa services in the calming atmosphere of our top-floor Spa rooms.

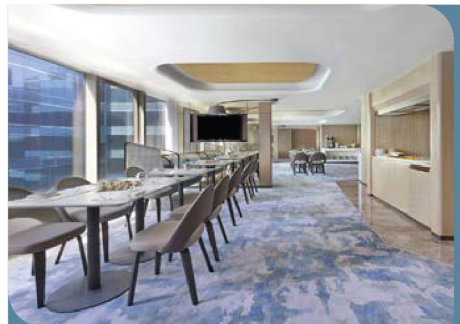


HARBOUR CLUB LOUNGE

Enjoy the privileges of executive class residence at our relaxing Harbour Club where complimentary breakfast, afternoon tea and evening refreshments are served.

Features

- Breakfast buffet at The Promenade on G/F
- Afternoon Tea
- Evening refreshments
- Business and concierge service
- 15% discount on private dining
- 20% discount at selected hotel restaurants
- 20% discount for laundry, pressing and dry cleaning services
- Private Computer Station
- Complimentary Wi-Fi Internet Access



20 Tak Fung Street, Whampoa Garden, Hunghom
Kowloon, Hong Kong (MTR Whampoa Station, Exit D2)
Tel: (852) 2621 3188 Fax: (852) 2621 3311 Email: hgkln@harbourgrand.com
www.harbourgrand.com/kowloon