



HARBOUR GRAND
HONG KONG

HOTEL FACT SHEET





Location

Harbour Grand Hong Kong is the latest 5-star property managed by Harbour Plaza Hotels & Resorts. Located in the heart of Hong Kong Island and ideally situated on the waterfront, guests will find themselves within walking distance of the convenient underground MTR transportation system, fashionable shopping centres and commercial offices in Causeway Bay, Wanchai and Central.

Accommodation

828 contemporary and modern designed hotel guestrooms and serviced suites are with wired and wireless broadband Internet access, including 86 luxurious suites and seven floors of 202 Harbour Club rooms – all with spectacular views overlooking the Victoria Harbour. Private patios with heated Jacuzzis are available in selected hotel rooms. All suites and some rooms are equipped with pantries to cater for long staying guests.

Facilities

- Business Centre providing secretarial services, Internet access and meeting facilities
- Room features with wired and wireless broadband Internet access, DVD player, LCD TV with cable and satellite programming, in-house movie, personal safe and private bar
- Rainforest showerheads in all guestrooms and circular bath tubs in selected rooms
- 24-hour private dining service
- State-of-the-art Fitness Centre
- 27m-long outdoor heated swimming pool, Jacuzzi and children's pool
- Spa / Massage facilities
- Hotel shuttle service to / from major local destinations

Harbour Club Floors

Harbour Club Floor are designed specially for the needs of today's business travellers. Executives staying at our Harbour Club floors can take advantage of the following extra benefits:

- Personalized checkin
- Express checkout
- Personalized butler services
- LCD TV in bathrooms of Harbour Club floor guestrooms
- Harbour Club floor guestrooms equipped with multi-purpose printer (Fax, Copy, Scan and Print)
- Harbour Club Lounge to serve Harbour Club floor guests with breakfast, afternoon snacks, evening cocktails and exclusive concierge services
- Complimentary use of boardroom at the Club Lounge (2 hours per day, subject to availability)
- Free local calls
- Welcome fruit plate with daily replenishment
- Complimentary pressing for 2 pieces of clothing
- 10% discount on laundry and pressing services
- Complimentary 3:00 pm late checkout (subject to availability)

Business Centre

Harbour Grand Hong Kong's state-of-the-art Business Centre caters to the needs of today's busy global executives, providing full business facilities and equipment. Both wired and wireless broadband Internet services are available for guests' convenience.

- Secretarial services
- Photocopying
- Typing
- Laser printing
- Broadband Internet service
- Courier / Postal service



Meeting & Banquet Facilities

Totalling 12,685 square feet of meeting and banquet space fully equipped with the latest audio-visual technology and wireless Internet connectivity, facilities include a 6,200-square-foot pillar-less Grand Ballroom with over 22 feet ceiling height and eight function rooms from 450 to 1,023 square feet – perfect for banquets, seminars and conferences.

Telecommunications

- Wireless and wired broadband Internet service
- Facsimile
- International Direct Dialling
- Video conferencing facilities

Equipment & Services

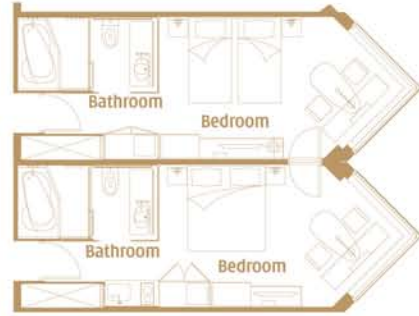
- Fax machine
- Mobile phone
- Notebook computer
- Visualizer
- LCD projector
- Overhead projector
- Multi-system TV
- Built-in and portable screen
- Microphone (wireless handheld or clip-on microphone)
- Standing microphone
- CD / VCD / DVD player
- DVD recorder
- Video camera, ceiling mounted
- Karaoke
- Portable stage
- Podium
- Teleconference system
- Laser pointer
- Flipchart and whiteboard
- Conference pads, pencils, mints and drinking water
- Wireless broadband Internet service
- Fast ethernet LAN and centralised patching facility
- Simultaneous interpretation facilities



Superior / Deluxe / Grand Deluxe
Harbour View Room



Connecting Room with Pantry



Premier Harbour View Room



Premier Harbour View Room
with Patio



Executive Harbour View Suite (I)



Executive Harbour View Suite (II)



Premier Harbour View Suite

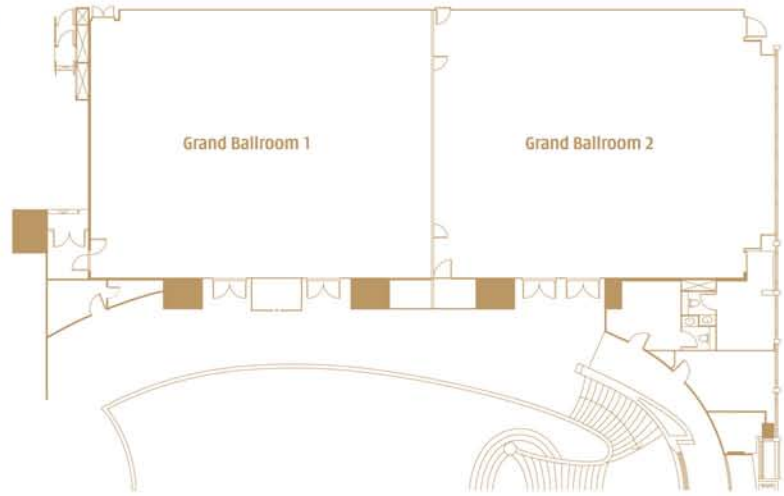


Two Bedroom Suite

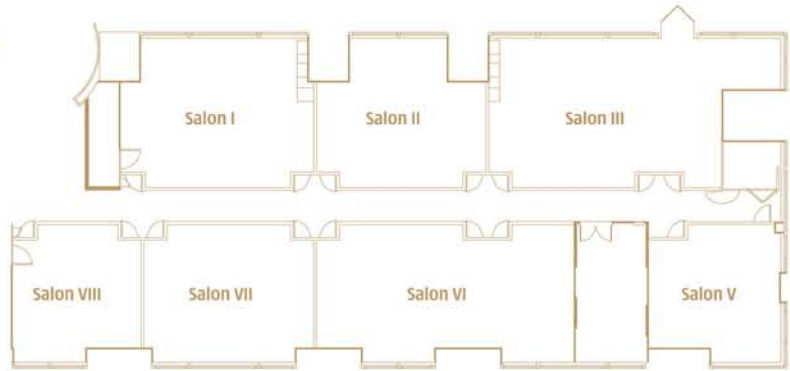


Floor Plans and Banqueting Capacity

Grand Ballroom, 1/F



Salon Rooms, 5/F



Venue	Size		Height		Round Table	Cocktail Reception	Theatre	U-Shape	Classroom	Boardroom
	Sq. ft.	Sq. m.	Feet	Metre						
Grand Ballroom, 1/F										
Grand Ballroom 1	3131	291	22	7	20	360	288/216*	54/51*	150/114*	66/60*
Grand Ballroom 2	3068	285	22	7	20	360	288/216*	54/51*	150/114*	66/60*
Grand Ballroom 1-2	6200	578	22	7	45	720	700/600*	132/129*	360/306*	144/132*
Pre-function Area	2099	195	-	-	-	-	-	-	-	-
Salon Rooms, 5/F										
Salon I	753	70	13	4	4	40	48/40*	24	42/36*	30
Salon II	599	56	13	4	3	30	62/53*	16	30/24*	26
Salon III	1022	95	13	4	5	60	102/90*	26	54/48*	32
Salon V	452	42	13	4	1	20	35/30*	16	21/18*	22/18*
Salon VI	917	85	13	4	4	50	100/85*	34	70/66*	38/32*
Salon VII	624	58	13	4	3	30	65/48*	22	36/33*	30/24*
Salon VIII	452	42	13	4	2	20	40/33*	16	22/18*	20/12*
Salon I-II	1356	126	13	4	6	70	104/96*	46	72/66*	50
Salon II-III	1625	151	13	4	8	90	118/110*	60	84/78*	64
Salon I-III	2378	221	13	4	13	130	168/150*	70	126/114*	92
Salon VI-VII	1539	143	13	4	6	80	156/138*	52	100/90*	56/50*
Salon VII-VIII	1076	100	13	4	4	50	110/95*	40	50/44*	44/38*
Salon VI-VIII	1991	185	13	4	9	100	200/160*	70	120/114*	80/68*
Salon I-VIII	6000	557	13	4	28	320	450/425*	72	216	84

* with Coffee Break Inside

Venue	Cocktail Reception	Buffet	Western Setup	Chinese Setup
Le188° Terrace	50	-	50	60
Viewing Deck	120	120	100	144

Convenience

From	Time	By
Mass Transit Railway - Fortress Hill Station	2 minutes	Walking
Causeway Bay Shopping District	8 minutes	MTR/Car/Hotel Shuttle
HK Convention & Exhibition Centre	10 minutes	MTR/Car/Hotel Shuttle
Cityplaza Taikoo Shing Shopping Mall	10 minutes	MTR/Car/Hotel Shuttle
Pacific Place	12 minutes	MTR/Car/Hotel Shuttle
Central	15 minutes	MTR/Car/Hotel Shuttle
Airport Express Hong Kong Station	17 minutes	MTR/Car/Hotel Shuttle
Stanley Market & Local Beaches	20 minutes	Car
Repulse Bay/Ocean Park	20 minutes	Car
Hong Kong Disneyland	40 minutes	Car
Hong Kong International Airport	45 minutes	Airport Shuttle/AEL/Car
AsiaWorld-Expo	50 minutes	AEL/Car

Dining

Le 188° Restaurant & Lounge

Surrounded by floor-to-ceiling windows on 3 sides, Le 188° Restaurant & Lounge features an oyster bar and modern European cuisine, treating diners an impressive 188-degree panoramic harbour view from the very top of Harbour Grand Hong Kong.

Location: 41/F

Kwan Cheuk Heen

Experience the delights of fine Cantonese cuisine in the backdrop of Hong Kong's signature harbour view.

Location: 5/F

Harbour Grand Café

Harbour Grand Café offers casual all-day dining and a lavish buffet selection, serving the best of international cuisine. Enjoy breakfast, lunch or dinner in a relaxing and refreshing environment by the poolside overlooking the Victoria Harbour.

Location: 3/F

Lobby Lounge

Enjoy high tea and evening cocktails at the Lounge or alfresco. A perfect place to sit back and relax with friends.

Location: G/F

Nagomi

This extremely exclusive dining experience provides a feast for the eyes as well as the palate with its unique Japanese Zen garden setting.

Location: G/F

Location Map



For enquires, please contact us or any of the following marketing offices:

Australia
Sydney Marketing Office
Tel: (61 2) 9929 2829
Email: rep.sydney@harbour-plaza.com

China
Beijing Marketing Office
Tel: (86 10) 6539 1395
Email: rep.beijing@harbour-plaza.com

Chengdu Marketing Office
Tel: (86 28) 8671 3696
Email: rep.chengdu@harbour-plaza.com

Guangzhou Marketing Office
Tel: (86 20) 8669 4109
Email: rep.guangzhou@harbour-plaza.com

Shanghai Marketing Office
Tel: (86 21) 5404 1051
Email: rep.shanghai@harbour-plaza.com

Germany
Düsseldorf Marketing Office
Tel: (49 211) 405 6504
Email: rep.germany@harbour-plaza.com

India
Bangalore Marketing Office
Tel: (91 80) 2211 0035
Email: rep.bangalore.india@harbour-plaza.com

Mumbai Marketing Office
Tel: (91 22) 6651 9111
Email: rep.mumbai.india@harbour-plaza.com

New Delhi Marketing Office
Tel: (91 124) 498 6002
Email: rep.newdelhi.india@harbour-plaza.com

Japan
Tokyo Marketing Office
Tel: (81 3) 5413 5780
Email: rep.tokyo@harbour-plaza.com

Korea
Seoul Marketing Office
Tel: (82 2) 554 9459
Email: rep.seoul@harbour-plaza.com

Russia
Moscow Marketing Office
Tel: (7 495) 621 4445
Email: rep.russia@harbour-plaza.com

Singapore
Singapore Marketing Office
Tel: (65) 6332 1826
Email: rep.singapore@harbour-plaza.com

Taiwan
Taipei Marketing Office
Tel: (886 2) 2507 5721
Email: rep.taipei@harbour-plaza.com

USA
California Marketing Office
Tel: (1 707) 677 9067
Email: rep.ca.usa@harbour-plaza.com

New York Marketing Office
Tel: (1 212) 253 9606
Email: rep.ny.usa@harbour-plaza.com

UK
Cambridgeshire Marketing Office
Tel: (44) 173 324 7375
Email: rep.uk@harbour-plaza.com

London Marketing Office
Tel: (44) 20 3286 8368
Email: gerritc@harbour-plaza.com

Global Distribution Systems
Amadeus XL HKGHGH
Worldspan XL HKGHG
Sabre XL 114411
Apollo/Galileo XL 16412

www.harbourgrand.com



HARBOUR GRAND
HONG KONG

A member of Harbour Plaza Hotels and Resorts
A Hutchison Whampoa and Cheung Kong (Holdings) Company

SUMMIT
HOTELS & RESORTS
PREMIER HOTEL GROUP

MTR Fortress Hill Station - Exit A, 23 Oil Street, North Point, Hong Kong Tel: (852) 2121 2688 Fax: (852) 2121 2699 Email: hghk@harbourgrand.com